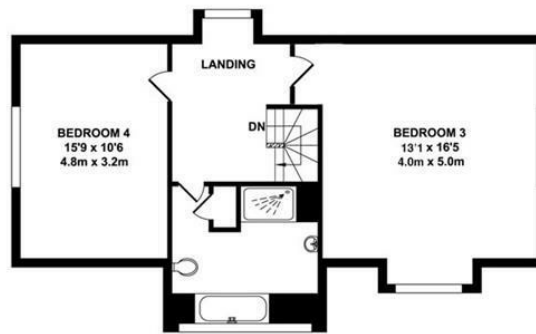
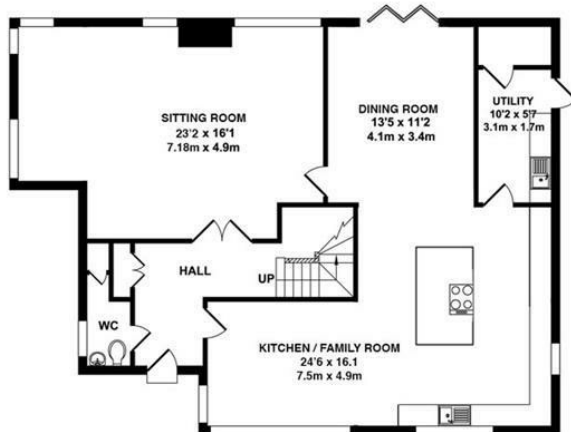


GARAGE
APPROX. FLOOR AREA
362 SQ. FT.
(33.64 SQ. M)



SECOND FLOOR
APPROX. FLOOR AREA
723 SQ. FT.
(67.19 SQ. M)



GROUND FLOOR
APPROX. FLOOR AREA
1101 SQ. FT.
(102.28 SQ. M)



FIRST FLOOR
APPROX. FLOOR AREA
1011 SQ. FT.
(93.97 SQ. M)

TOTAL APPROX. FLOOR AREA 3198 SQ.FT. (297.08 SQ.M.)

Whilst every attempt has been made to ensure the accuracy of the floor plan contained here, measurements of doors, windows, rooms and any other items are approximate and no responsibility is taken for any error, omission or misstatement. This plan is for illustrative purposes only and should be used as such by any prospective purchaser. The services, systems and appliances shown have not been tested and no guarantee as to their operability or efficiency can be given.
Zome Media ©2023



01732 522 822
info@khp.me



Clemens Place
Kings Hill ME19 4QH
Guide Price £1,100,000

Tenure: Freehold

Council tax band: G



